



School Term and Holiday Dates

Autumn Term 2024

Autumn Half Term

Monday 21st October – Friday
1st November 2024

Friday 29th November 2024 -
St Andrew's Day School closed

Last Day of Term – Friday 20th
December 2024

School Closes at 1.30pm

Spring Term 2025

Children return to school on
Monday 6th January 2025

Spring Half Term

Monday 17th February – Friday
21st February 2025

Last Day of Term – Friday 4th
April 2025

School Closes at 1.30pm

Summer Term 2025

Children return to school on
Tuesday 22nd April 2025

Summer Half Term

Monday 26th May – Friday 30th
May 2025

Last Day of Term – Tuesday
22nd July 2025

School Closes at 1.30pm

School will be closed: Monday
5th May 2025

Newsletter 13 Friday 13th December 2024

DATES FOR YOUR DIARIES



Contact us: 0207 274 7012 or
admin@standrewsce.lambeth.sch.uk

Don't forget to check out the website: www.standrewsprimaryschoolstockwell.org

Check out our class blog site: www.standrewsallstars.com

FOOTBALL FIXTURES/ RESULTS

Pos	Team	P	W	D	L	GD	PTS
1	Granton	7	6	1	0	19	19
2	Walnut Tree Walk	6	6	0	0	24	18
3	Hill Mead	7	5	2	0	14	17
4	St Stephen's	7	5	1	1	6	16
5	Henry Fawcett	5	5	0	0	15	15
6	Clapham Manor	7	5	0	2	11	15
7	Allen Edwards	8	4	0	4	-7	12
8	Stockwell	6	3	2	1	1	11
9	Bonneville Primary	5	2	2	1	2	8
10	Sudbourne Primary	5	2	1	2	3	7
11	Stockwell B	4	1	1	2	-4	4
12	St Saviour's	5	1	1	3	-6	4
13	St Andrews	5	1	0	4	-4	3

Year 1 had a lovely walking tour of Lambeth this afternoon using their maps to find landmarks!



A HUGE THANK YOU TO MISS SUE, THE PTA AND FATHER CHRISTMAS FOR A LOVELY CHRISTMAS FAIR THIS EVENING. THE CHILDREN AND ADULTS HAD A GREAT TIME.

THANK YOU TO STAFF AND PARENTS WHO HELPED MAKE IT A SUCCESS!



RING OUT THE BELLS



A massive congratulations to Reception and Key Stage 1 for such a superb Christmas concert: reminding us of the true meaning of Christmas. Thank you to parents and teachers for your efforts and Mrs Alfred for putting it altogether. We are looking forward to KS2 next week!





Attendance Matters

Attendance Percentages Last Week	Number of Children Late Before the Close of Register	Number of Children Late After the Close of Register
YR—88%	YR—06	YR—2
Y1—93%	Y1—05	Y1—0
Y2—96%	Y2—07	Y2—2
Y3—94%	Y3—02	Y3—2
Y4—88%	Y4—01	Y4—0
Y5—94%	Y5—11	Y5—1
Y6—98%	Y6—08	Y6—0

Class	Number of children who read every day this week	Percentage
Mars	YR—0	YR—0
Cosmic	Y1—19	Y1—86%
Golden	Y2—22	Y2—81%
Diamond	Y3—14	Y3—82%
Heroes	Y4—15	Y4—83%
Stardust	Y5—20	Y5—69%
Aladdin	Y6—23	Y6—92%



Year 6 Residential Manor Adventure Norfolk Lakes
14th– 18th July 2025

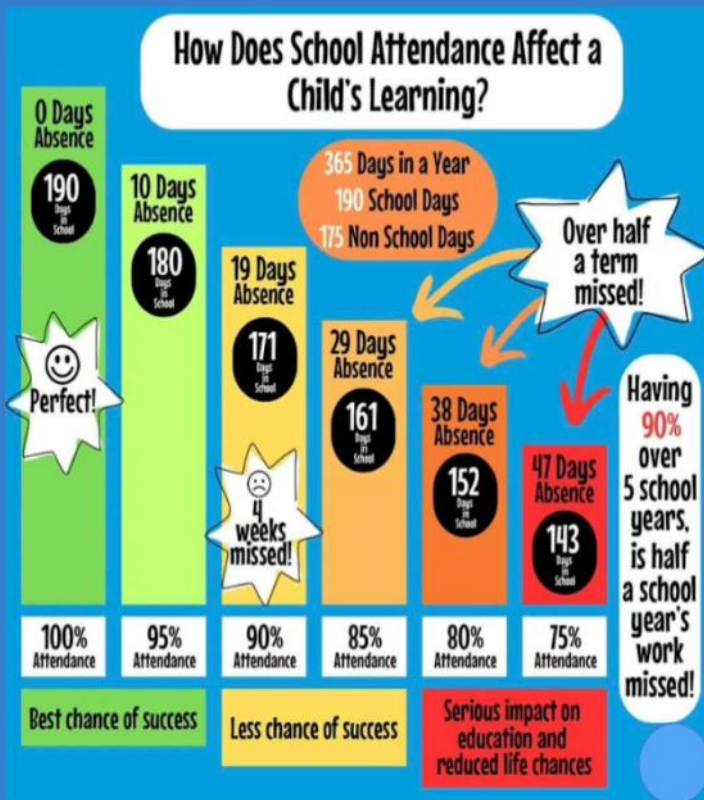
The remaining instalments are live on ParentPay.

YR Visit
Clapham Omnibus Theatre
Tuesday 17th December



ST ANDREW'S CE PRIMARY SCHOOL

A MEMBER OF THE SW9 PARTNERSHIP



Christmas Jumper Day



Tuesday 17th December we will be having our Christmas lunch and Christmas jumper day. Children can wear own clothes and a Christmas jumper. If your child usually has a packed lunch and you would like them to have a school lunch please contact the school office by Friday 6th December.

We will be collecting £1 donations and these will be sent to Save the Children.