



School Term and Holiday Dates

Autumn Term 2024

Autumn Half Term

Monday 21st October – Friday
1st November 2024

Friday 29th November 2024 -

St Andrew's Day School closed

Last Day of Term – Friday 20th
December 2024

School Closes at 1.30pm

Spring Term 2025

Children return to school on
Monday 6th January 2025

Spring Half Term

Monday 17th February – Friday
21st February 2025

Last Day of Term – Friday 4th
April 2025

School Closes at 1.30pm

Summer Term 2025

Children return to school on
Tuesday 22nd April 2025

Summer Half Term

Monday 26th May – Friday 30th
May 2025

Last Day of Term – Tuesday
22nd July 2025

School Closes at 1.30pm

School will be closed: Monday
5th May 2025

Newsletter 12 Friday 6th December 2024

DATES FOR YOUR DIARIES



Now may the Lord of peace himself give you peace at all times in every way. The Lord be with you all.





2 Thessalonians 3:16

Contact us: 0207 274 7012 or
admin@standrewsce.lambeth.sch.uk

Don't forget to check out the website: www.standrewsprimaryschoolstockwell.org

Check out our class blog site: www.standrewsallstars.com

FOOTBALL FIXTURES/ RESULTS

04/12/24	St Andrews		1 - 4		Walnut Tree Walk
04/12/24	St Andrews		3 - 5		Clapham Manor

Pos	Team	P	W	D	L	GD	PTS
1	Granton	7	6	1	0	19	19
2	Walnut Tree Walk	6	6	0	0	24	18
3	Hill Mead	7	5	2	0	14	17
4	St Stephen's	7	5	1	1	6	16
5	Henry Fawcett	5	5	0	0	15	15
6	Clapham Manor	7	5	0	2	11	15
7	Allen Edwards	8	4	0	4	-7	12
8	Stockwell	6	3	2	1	1	11
9	Bonneville Primary	5	2	2	1	2	8
10	Sudbourne Primary	5	2	1	2	3	7
11	Stockwell B	4	1	1	2	-4	4
12	St Saviour's	5	1	1	3	-6	4
13	St Andrews	5	1	0	4	-4	3

Deen City Farm

Year 2 had a lovely morning at the farm learning all about life cycles and feeding the animals.





There will be Mufti-day on Friday 13th December. Instead of payment this year we are asking for donations for the tombola. Either chocolate for the children's prizes or wine or chocolate, tins good etc for adult prizes.

Friday 13th December 3.30-5.30

Christmas Fayre

Santa's Grotto

Hair Braiding

Toy sale

Mulled wine

Prosecco

Mince pies

Nails

Burgers

Hot dogs

Candy floss

Cookies Bakery

Chocolate Orange

Mars

Terry's

Cadbury Dairy Milk

Basilobout

55

45

20

25

30

35

40

45

50

55

60

65

70

75

80

85

90

95

100

Bring in your Jolly Jars
Win an extra special prize!!

Get an empty jar with a lid, decorate it, fill it with treats and bring it to school. The best Jolly Jars will win a prize. The jars will be sold at the Xmas Fayre to help raise funds for the school. You've got to be in it to win it!

WE NEED YOUR HELP!
IF YOU ARE AVAILABLE TO COME AND SET UP OR RUN A STALL AT OUR CHRISTMAS FAIR PLEASE SPEAK TO MISS SUE OR SHANA (PTA CHAIR). FOR THE FAIR TO BE A SUCCESS WE NEED ALL HANDS ON BOARD!

TRAVELLING BOOKS

COME TO THE 3 FOR 2 BOOK FAIR

READING GIVES YOU SUPERPOWERS!

GET 3 BOOKS FOR THE PRICE OF 2!

LAST YEAR, YOUR SUPPORT HELPED TO DONATE OVER £5.3M IN BOOKS TO SCHOOLS NATIONWIDE

MY FRONT COVER:

SCHOLASTIC

£5.00

£5 PRIZE VOUCHER

Terms and conditions: 1. Valid for one transaction from your Scholastic Book Fair only. 2. Debit or pre-authorized vouchers not accepted. 3. No charge given for items less than full value.

ST ANDREW'S CE PRIMARY SCHOOL

A MEMBER OF THE SW9 PARTNERSHIP

At St. Andrew's we welcome you to our happy, safe and Christian family, where we encourage everyone to do their very best. Our vision is to inspire our children to be confident individuals, who are excited about learning and curious about the world they live in. It is our desire that every child who joins St. Andrew's will achieve high academic standards and indeed, as our school motto states 'Reach for the Stars' and beyond!

The book fair is here!
To win a £5 book fair voucher design your own book cover!
4 vouchers to be won!
Deadline Wednesday 11th December.
Winners will be announced on Thursday 12th December.
See Miss Spring for a cover sheet.



Attendance Matters

Attendance Percentages Last Week	Number of Children Late Before the Close of Register	Number of Children Late After the Close of Register
YR—95%	YR—09	YR—3
Y1—93%	Y1—04	Y1—2
Y2—93%	Y2—05	Y2—0
Y3—91%	Y3—03	Y3—2
Y4—89%	Y4—02	Y4—0
Y5—90%	Y5—06	Y5—0
Y6—94%	Y6—08	Y6—0

Class	Number of children who read every day this week	Percentage
Mars	YR—0	YR—0
Cosmic	Y1—13	Y1—85%
Golden	Y2—21	Y2—76%
Diamond	Y3—8	Y3—88%
Heroes	Y4—14	Y4—45%
Stardust	Y5—23	Y5—72%
Aladdin	Y6—24	Y6—92%

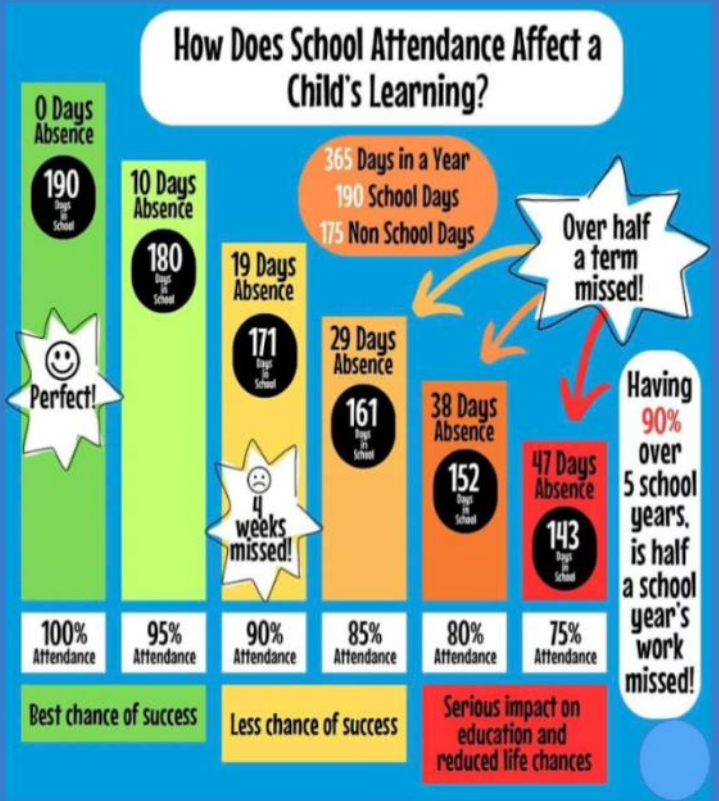


Year 6 Residential Manor Adventure Norfolk Lakes
14th– 18th July 2025

The remaining instalments are live on ParentPay.

ST ANDREW'S CE PRIMARY SCHOOL

A MEMBER OF THE SW9 PARTNERSHIP



Christmas Jumper Day



Tuesday 17th December we will be having our Christmas lunch and Christmas jumper day. Children can wear own clothes and a Christmas jumper. If your child usually has a packed lunch and you would like them to have a school lunch please contact the school office by Friday 6th December.

We will be collecting £1 donations and these will be sent to Save the Children.

YR Visit
Clapham Omnibus Theatre
Tuesday 17th December



Y6 Visit
Citizens Workshop
Friday 13th December

