

ST ANDREW'S CE PRIMARY SCHOOL



A MEMBER OF THE  SW9 PARTNERSHIP

School Term and Holiday Dates

Autumn Term 2024

Autumn Half Term

Monday 21st October – Friday
1st November 2024

**Friday 29th November
2024 -**

**St Andrew's Day School
closed**

Last Day of Term – Friday 20th
December 2024

School Closes at 1.30pm

Spring Term 2025

Children return to school on
Monday 6th January 2025

Spring Half Term

Monday 17th February – Friday
21st February 2025

Last Day of Term – Friday 4th
April 2025

School Closes at 1.30pm

Summer Term 2025

Children return to school on
Tuesday 22nd April 2025

Summer Half Term

Monday 26th May – Friday 30th
May 2025

Last Day of Term – Tuesday
22nd July 2025

School Closes at 1.30pm

Newsletter 10 Friday 22nd November 2024

DATES FOR YOUR DIARIES



ST ANDREW'S DAY

**FRIDAY 29TH
NOVEMBER
SCHOOL CLOSED**





Contact us: 0207 274 7012 or
admin@standrewsce.lambeth.sch.uk

Don't forget to check out the website: www.standrewsprimaryschoolstockwell.org

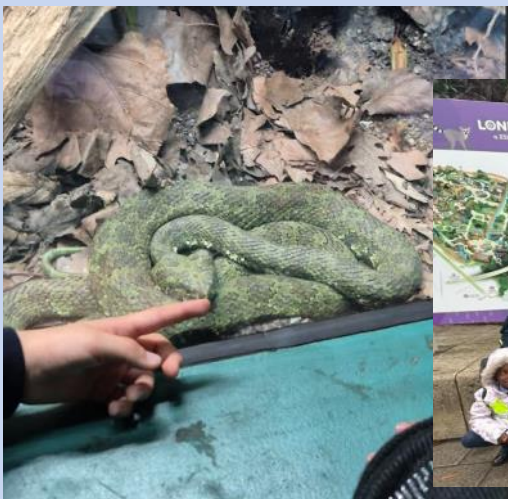
Check out our class blog site: www.standrewsallstars.com

FOOTBALL RESULTS

St Andrews		3 - 4		St Stephen's
St Andrews		0 - 1		Henry Fawcett

Pos	Team	P	W	D	L	GD	PTS
1	Granton	5	5	0	0	14	15
2	Hill Mead	5	4	1	0	9	13
3	St Stephen's	4	4	0	0	4	12
4	Walnut Tree Walk	3	3	0	0	11	9
5	Henry Fawcett	3	3	0	0	10	9
6	Stockwell	4	2	1	1	0	7
7	Clapham Manor	4	2	0	2	5	6
8	Allen Edwards	4	2	0	2	-7	6
9	Bonneville Primary	4	1	2	1	0	5
10	Stockwell B	2	1	1	0	2	4
11	St Andrews	3	1	0	2	1	3

Year 1 had a lovely time at the zoo on Monday! Spotting animals from different groups!



Dear Families of
St Andrews CoE Primary School,

IMPORTANT NEWS

From the Monday 18th November 2024
School Streets will restrict vehicle access to
LINGHAM STREET
during school drop-off and pick-up times.

**NO UNAUTHORISED VEHICLES ARE ALLOWED ON
LINGHAM STREET AT THE TIMES BELOW:**

08:15 - 09:15

14:45 - 15:45

Please note that the restrictions will continue to apply on
inset days, strike days or any other irregular days within
the school term time.

The schemes aim to create safer and more pleasant
environments outside of schools by prioritising
pedestrians and cyclists and encouraging walking, cycling
and scooting to school.

Lambeth School Streets
Thanks for making it safe to get to school
Find out more and how you can have your say:
www.lambeth.gov.uk/schoolstreets

Lambeth

**FINES WILL BE IMPOSED ON ALL AUTHORISED VEHICLES ACCESSING
LINGHAM STREET FROM NOVEMBER 17TH 2024
FOR MORE INFORMATION : WWW.LAMBETH.GOV.UK/SCHOOLSTREETS**

This week there have been an increased number of late children. Parents are not to use Kay Road gates as an alternative to Lingham street. The gate on Lingham Street closes at 9.05. If your child arrives at school after 9.00 they will be marked as late. You might be required to attend the school attendance panel for persistent lateness. Traffic wardens will be monitoring Kay Road.

This Term our Value is:

God blesses you
with peace

"The Lord gives his
people strength. The
Lord blesses them with
peace."

- Psalm 29:11 (NLT)

Lambeth would like to introduce to you the Dolly Parton's Imagination Library that they have recently launched to help inspire a love of reading in Lambeth's youngest residents. The scheme is open to all Lambeth children aged 0-4 years.

Parents can register their children online, please see the attached poster with QR code. Once a child is registered, they will receive a book in post every month until their 5th birthday, which may be up to 60 books. Imagination Library books are specially selected, high-quality titles. The books are specially wrapped and addressed to the child, and are delivered at no cost to the family.

**ST ANDREW'S
CE PRIMARY SCHOOL**
A MEMBER OF THE SW9 PARTNERSHIP

At St. Andrew's we welcome you to our happy, safe and Christian family, where we encourage everyone to do their very best.
Our vision is to inspire our children to be confident individuals, who are excited about learning and curious about the world they live in. It is our desire that every child who joins St. Andrew's will achieve high academic standards and indeed, as our school motto states 'Reach for the Stars' and beyond!

**Dolly Parton's
IMAGINATION
LIBRARY**
LAMBETH

Inspire a
LOVE
of Reading

**Available to all children
under 5 living in Lambeth**

Enrol your child in Dolly Parton's Imagination Library and receive a FREE BOOK every month from birth to their 5th birthday.

Dolly Parton's Imagination Library is dedicated to inspiring a love of reading by gifting books free of charge to children from birth to age five, through funding shared by Dolly Parton and local community partners in the United States, United Kingdom, Canada, Australia and Republic of Ireland.

Contact us at fis@lambeth.gov.uk
If you need support with completing the online registration form, please visit your local children's centre or library.

**Register
Your Child For
FREE BOOKS!**

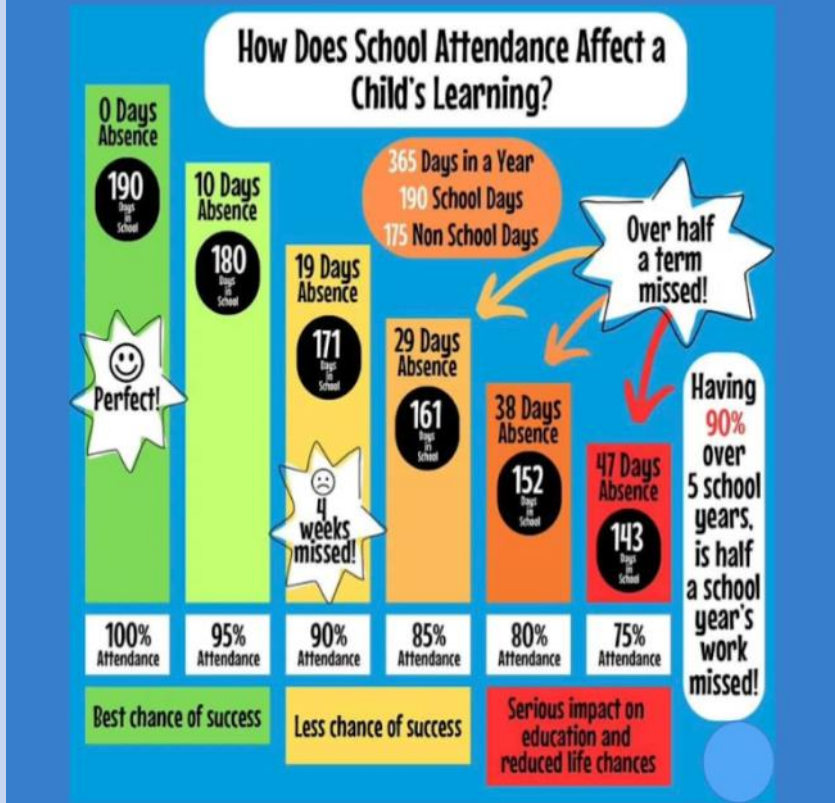
Lambeth ImaginationLibrary.com



Attendance Matters

Attendance Percentages Last Week	Number of Children Late Before the Close of Register	Number of Children Late After the Close of Register
YR—87%	YR—05	YR—03
Y1—90%	Y1—08	Y1—01
Y2—91%	Y2—19	Y2—0
Y3—98%	Y3—02	Y3—0
Y4—92%	Y4—05	Y4—0
Y5—95%	Y5—15	Y5—0
Y6—90%	Y6—09	Y6—1

Class	Number of children who read every day this week	Percentage
Mars	YR—0	YR—0
Cosmic	Y1—16	Y1—66%
Golden	Y2—22	Y2—76%
Diamond	Y3—12	Y3—71%
Heroes	Y4—15	Y4—79%
Stardust	Y5—27	Y5—93%
Aladdin	Y6—22	Y6—88%



Please pay or they can't stay!

Please be reminded that After School and Breakfast Club provision is not a free service. Bookings and payments must be made via Parentpay in advance by 3.30 pm, on the day the service is required.

Y2 Visit
Deen City Farm

Friday 6th December



The PTA needs you!

The PTA have asked for 1 parent from each class to be a class rep. This would involve you coming to the PTA meetings and sharing that information with the other parents in your child's class. There are lots of great plans in the pipeline and they want you and your children to be involved. Please speak to Sharna (the Chair)

Parent of Safiyah in year 2.

ST ANDREW'S CE PRIMARY SCHOOL
A MEMBER OF THE SW9 PARTNERSHIP

PARENT TEACHER MEETINGS

Reception and Year 6
Wednesday 27th and Thursday 28th
November

We will be meeting every Thursday at 9.00am to discuss the organisation of the fayre - please feel free to join us.

Candy floss

Friday 13th
December
3.30-5.30

Santa's Grotto

Toy sale

Hair Braiding

Christmas Fayre

Mulled wine

Please donate the following
to our Christmas Bazaar

Prosecco

YOUR TIME!

We need lots of help on the day, so please let us know if we can count on you.

Mince pies

Unused nail varnish

Preloved Clothes and Toys (Clean please)

New, but unwanted items

Bottles for the Tombola etc

Burgers

Hot dogs

Nails

Do you work for a great company that might like to make a donation to the school?

Bring in your Jolly Jars
Win an extra special prize!!



Get an empty jar with a lid, decorate it, fill it with treats and bring it to school. The best Jolly Jars will win a prize. The jars will be sold at the Xmas Fayre to help raise funds for the school.

You've got to be in it to win it!