

ST ANDREW'S CE PRIMARY SCHOOL



A MEMBER OF THE  SW9 PARTNERSHIP

School Term and Holiday Dates

Autumn Term 2024

Autumn Half Term

Monday 21st October – Friday
1st November 2024

Friday 29th November 2024 -

St Andrew's Day School closed

Last Day of Term – Friday 20th
December 2024

School Closes at 1.30pm

Spring Term 2025

Children return to school on
Monday 6th January 2025

Spring Half Term

Monday 17th February – Friday
21st February 2025

Last Day of Term – Friday 4th
April 2025

School Closes at 1.30pm

Summer Term 2025

Children return to school on
Tuesday 22nd April 2025

Summer Half Term

Monday 26th May – Friday 30th
May 2025

Last Day of Term – Tuesday
22nd July 2025

School Closes at 1.30pm

School will be closed: Monday
5th May 2025

Newsletter 09 Friday 15th November 2024

Have you booked your Parents Evening appointment?

It's not too late!

Log into your Parentmail app and book your slot today!



Please note that
Year R and Year 6
Parent teacher
meetings will be
held the following
week on
Wednesday 27th
November and
Thursday 28th
November.



**Contact us: 0207 274 7012 or
admin@standrewsce.lambeth.sch.uk**

Don't forget to check out the website: www.standrewsprimaryschoolstockwell.org

Check out our class blog site: www.standrewsallstars.com

REMEMBRANCE SUNDAY

Thank you to the children and families that represented St Andrew's on Remembrance Sunday. Uwitonze laid her black poppy wreath.



Operation Christmas Child

Our Faith Group are pictured here, decorating and filling shoeboxes with your very special gifts.

With your donations they were able to fill 7 shoeboxes.

Thank you for your kind and generous Donations.

Dear Families of
St Andrews CoE Primary School,

IMPORTANT NEWS

From the Monday 18th November 2024
School Streets will restrict vehicle access to
LINGHAM STREET
during school drop-off and pick-up times.

NO UNAUTHORISED VEHICLES ARE ALLOWED ON
LINGHAM STREET AT THE TIMES BELOW:

08:15 - 09:15


14:45 - 15:45

Please note that the restrictions will continue to apply on
inset days, strike days or any other irregular days within
the school term time.

The schemes aim to create safer and more pleasant
environments outside of schools by prioritising
pedestrians and cyclists and encouraging walking, cycling
and scooting to school.

Lambeth School Streets

Thanks for making it safe to get to school

Find out more and how you can have your say
www.lambeth.gov.uk/schoolstreets 




Lambeth

FINES WILL BE IMPOSED ON ALL AUTHORISED VEHICLES ACCESSING
LINGHAM STREET FROM NOVEMBER 17TH 2024
FOR MORE INFORMATION : WWW.LAMBETH.GOV.UK/SCHOOLSTREETS



Attendance Matters

Attendance Percentages Last Week

YR—91%
Y1—95%
Y2—96%
Y3—92%
Y4—89%
Y5—92%
Y6—93%

Number of Children Late Before the Close of Register

YR—03
Y1—03
Y2—05
Y3—05
Y4—01
Y5—03
Y6—12

Number of Children Late After the Close of Register

YR—4
Y1—1
Y2—1
Y3—0
Y4—0
Y5—1
Y6—1

Class

Mars
Cosmic
Golden
Diamond
Heroes
Stardust
Aladdin

Number of children who read every day this week

YR—0
Y1—19
Y2—22
Y3—15
Y4—9
Y5—21
Y6—23

Percentage

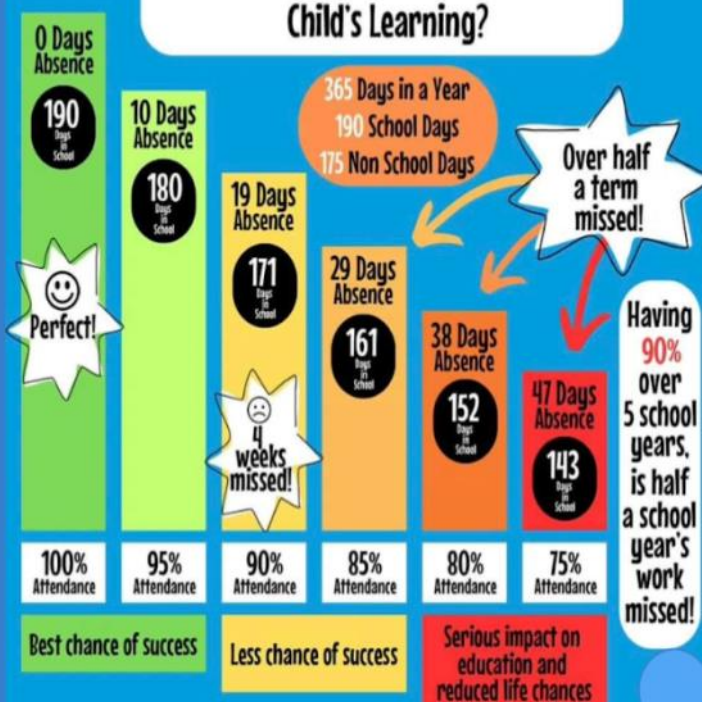
YR—0
Y1—85%
Y2—76%
Y3—88%
Y4—45%
Y5—72%
Y6—92%



ST ANDREW'S CE PRIMARY SCHOOL

A MEMBER OF THE SW9 PARTNERSHIP

How Does School Attendance Affect a Child's Learning?



Please pay or they can't stay!

Please be reminded that After School and Breakfast Club provision is not a free service. Bookings and payments must be made via Parentpay in advance by 3.30 pm, on the day the service is required.

Y1 Visit
London Zoo
Monday 18th
November



Flu Vaccinations

**TUESDAY 26TH
NOVEMBER**



ST ANDREWS DAY

**FRIDAY 29TH
NOVEMBER SCHOOL
CLOSED**



We will be meeting every Thursday at 9.00am to discuss the organisation of the fayre - please feel free to join us.

Friday 13th
December
3.30-5.30

Christmas Fayre

Please donate the following
to our Christmas Bazaar

YOUR TIME!

We need lots of help on the day, so please let us know if we can count on you.

Unused nail varnish

Preloved Clothes and Toys (Clean please)

New, but unwanted items

Bottles for the Tombola etc

Do you work for a great company that might like to make a donation to the school?

Bring in your Jolly Jars
Win an extra special prize!!



Get an empty jar with a lid, decorate it, fill it with treats and bring it to school. The best Jolly Jars will win a prize. The jars will be sold at the Xmas Fayre to help raise funds for the school.

You've got to be in it to win it!