

ST ANDREW'S CE PRIMARY SCHOOL

A MEMBER OF THE  SW9 PARTNERSHIP



School Term and Holiday Dates

Autumn Term 2024

Autumn Half Term

Monday 21st October – Friday
1st November 2024

Friday 29th November 2024 -

St Andrew's Day School closed

Last Day of Term – Friday 20th
December 2024

School Closes at 1.30pm

Spring Term 2025

Children return to school on
Monday 6th January 2025

Spring Half Term

Monday 17th February – Friday
21st February 2025

Last Day of Term – Friday 4th
April 2025

School Closes at 1.30pm

Summer Term 2025

Children return to school on
Tuesday 22nd April 2025

Summer Half Term

Monday 26th May – Friday 30th
May 2025


Last Day of Term – Tuesday
22nd July 2025

School Closes at 1.30pm

School will be closed: Monday
5th May 2025

Newsletter 08 Friday 8th November 2024


WINNERS 3-0



A BIG CONGRATULATIONS TO OUR FOOTBALL TEAM WHO WON THEIR FIRST MATCH THIS WEEK WINNING 3-0. A SUPER SHOUT OUT TO KORTTEZ WHO SCORED ALL THREE GOALS AND SHAMI WHO WAS THE GOAL KEEPER NOT LETTING ANYTHING PAST HIM. KEEP IT UP!

ST ANDREW'S
CE PRIMARY SCHOOL
A MEMBER OF THE  SW9 PARTNERSHIP

**LAST DAY
OF AUTUMN
TERM 2024**
FRIDAY 20TH
DECEMBER 2024
SCHOOL CLOSURES AT 1.30PM

ST ANDREW'S
CE PRIMARY SCHOOL
A MEMBER OF THE  SW9 PARTNERSHIP

Christingle Service
St. Michael's Church, Stockwell Park Road
Friday 20th December 2024 at 9.30am

Contact us: 0207 274 7012 or

admin@standrewsce.lambeth.sch.uk

Don't forget to check out the website: www.standrewsprimaryschoolstockwell.org

Check out our class blog site: www.standrewsallstars.com

REMEMBERANCE SUNDAY



The Mayor of Lambeth has specifically asked if children from St Andrew's school would like to be part of the official Stockwell Memorial parade and Act of Remembrance on Sunday 10th November at 10.45 for 11am start. The children would not have to say anything but would be welcome to lay a wreath during the act of remembrance.

This is a wonderful opportunity that our children have been offered. If your child is interested in representing the school please attend on Sunday.

Revd. Erica will be attending with the children but we do ask Parents/Carers to stay for the duration of the service. Sadly, I am unable to attend this year due to a prior commitment.

Please ensure that your child is smartly dressed wearing their full school uniform and warm outdoor clothing.



Operation Christmas Child
Sharing Good News and Great Joy

After last year's success, we will continue to partner with Samaritans Purse by taking part in Operation Christmas Child. The gifts that children can bring are shown on the link below. We are collecting for children aged 7-10.

<https://www.samaritans-purse.org.uk/what-we-do/operation-christmas-child/how-to-pack-a-shoebox#gift-suggestions>

Children who are participating must bring their donations to school by Thursday 14th November 2024 - Faith group will be packing the boxes that lunchtime.
WE DO NOT NEED WRAPPING PAPER OR SHOE BOXES this year as we have already collected these. Thank you for your generosity and kindness.

Donations can be placed in the boxes on the stage.

Dear Families of
St Andrews CoE Primary School,

IMPORTANT NEWS

From the Monday 18th November 2024
School Streets will restrict vehicle access to
LINGHAM STREET
during school drop-off and pick-up times.

**NO UNAUTHORISED VEHICLES ARE ALLOWED ON
LINGHAM STREET AT THE TIMES BELOW:**

08:15 - 09:15

14:45 - 15:45

Please note that the restrictions will continue to apply on
inset days, strike days or any other irregular days within
the school term time.

The schemes aim to create safer and more pleasant
environments outside of schools by prioritising
pedestrians and cyclists and encouraging walking, cycling
and scooting to school.

Lambeth School Streets

Thanks for making it safe to get to school

Find out more and how you can have your say
www.lambeth.gov.uk/schoolstreets



Lambeth

**FINES WILL BE IMPOSED ON ALL AUTHORISED VEHICLES ACCESSING
LINGHAM STREET FROM NOVEMBER 17TH 2024
FOR MORE INFORMATION : WWW.LAMBETH.GOV.UK/SCHOOLSTREETS**



Attendance Matters

Attendance Percentages Last Week

YR—98%
Y1—96%
Y2—95%
Y3—97%
Y4—89%
Y5—94%
Y6—96%

Number of Children Late Before the Close of Register

YR—07
Y1—05
Y2—08
Y3—07
Y4—03
Y5—02
Y6—02

Number of Children Late After the Close of Register

YR—1
Y1—0
Y2—0
Y3—0
Y4—0
Y5—0
Y6—0

Class

Mars
Cosmic
Golden
Diamond
Heroes
Stardust
Aladdin

Number of children who read every day this week

YR—0
Y1—17
Y2—25
Y3—11
Y4—13
Y5—27
Y6—20

Percentage

YR—0
Y1—56%
Y2—89%
Y3—68%
Y4—65%
Y5—76%
Y6—88%



Y1 Visit London Zoo

Monday 18th
November



PACKED LUNCHES

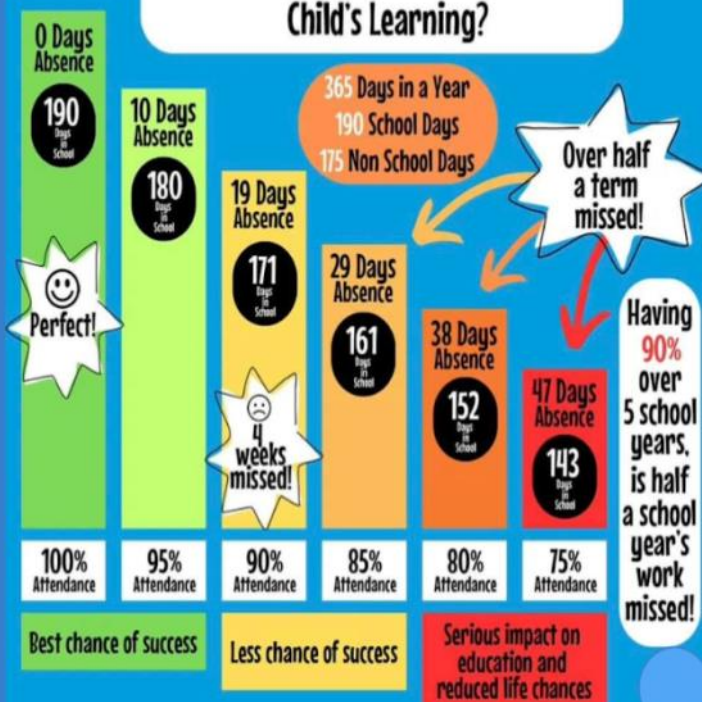
A reminder that we are a nut free school. We have children and staff who have nut allergies. No nut in packed lunches, this includes Nutella.



ST ANDREW'S CE PRIMARY SCHOOL

A MEMBER OF THE SW9 PARTNERSHIP

How Does School Attendance Affect a Child's Learning?



School uniform

Parents and carers are reminded that full school uniform should be worn at all times unless the school informs you otherwise. Please clearly label all of your child's uniform and regularly check the uniform they are bringing home belongs to them. If you notice your child has clothing that doesn't belong to them please return it to the class teacher.

School uniform checks will take place next week.



ST ANDREW'S CE PRIMARY SCHOOL

A MEMBER OF THE  **SW9 PARTNERSHIP**



ODD SOCKS DAY

Tuesday 12th November 2024

As a part of friendship week will be having an odd socks day. Children are still to come dressed in full uniform. We will be celebrating individuality, promoting acceptance and raising awareness about bullying and prejudice.

ST ANDREW'S CE PRIMARY SCHOOL

A MEMBER OF THE  **SW9 PARTNERSHIP**



**Friendship & Interfaith Week
Monday 11th November 2024**

As a part of Interfaith Week we are inviting parents in.

Would you like to read a story on Friday 15th November between 12.10-12.25 based on either friendship or a different faith - Islam, Hinduism, Sikhism, Buddhism, Judaism?

If you are interested, please speak to Miss Plumridge, Year 5 Class Teacher, who will confirm which class you are assigned to.

ST ANDREW'S CE PRIMARY SCHOOL

A MEMBER OF THE  **SW9 PARTNERSHIP**



**PARENT TEACHER
MEETINGS**

**WEDNESDAY 20TH NOVEMBER 2024
THURSDAY 21ST NOVEMBER 2024**

Please note that Year R and Year 6 Parent teacher meetings will be held the following week on Wednesday 27th November and Thursday 28th November.

The booking system will go live next week.