



School Term and Holiday Dates

Autumn Term 2024

Autumn Half Term

Monday 21st October – Friday
1st November 2024

Friday 29th November 2024 -

St Andrew's Day School closed

Last Day of Term – Friday 20th
December 2024

School Closes at 1.30pm

Spring Term 2025

Children return to school on
Monday 6th January 2025

Spring Half Term

Monday 17th February – Friday
21st February 2025

Last Day of Term – Friday 4th
April 2025

School Closes at 1.30pm

Summer Term 2025

Children return to school on
Tuesday 22nd April 2025

Summer Half Term

Monday 26th May – Friday 30th
May 2025

Last Day of Term – Tuesday
22nd July 2025

School Closes at 1.30pm

School will be closed: Monday
5th May 2025

Newsletter 06 Friday 11th October 2024

ST ANDREW'S
CE PRIMARY SCHOOL



A MEMBER OF THE  SW9 PARTNERSHIP

CELEBRATE

BLACK HISTORY MONTH

CELEBRATION ASSEMBLY
FRIDAY 18TH OCTOBER 2024 AT 9.10AM

SHOW RACISM THE RED CARD

Next week there will be more information shared about a nationwide school competition to spread and support the important message of anti-racism. We would love for our children and families to get involved .



Autumn Half Term
Monday 21st October -
Friday 1st November 2024

ST ANDREW'S
CE PRIMARY SCHOOL
A MEMBER OF THE  SW9 PARTNERSHIP

Contact us: 0207 274 7012 or
admin@standrewsce.lambeth.sch.uk

Don't forget to check out the website: www.standrewsprimaryschoolstockwell.org

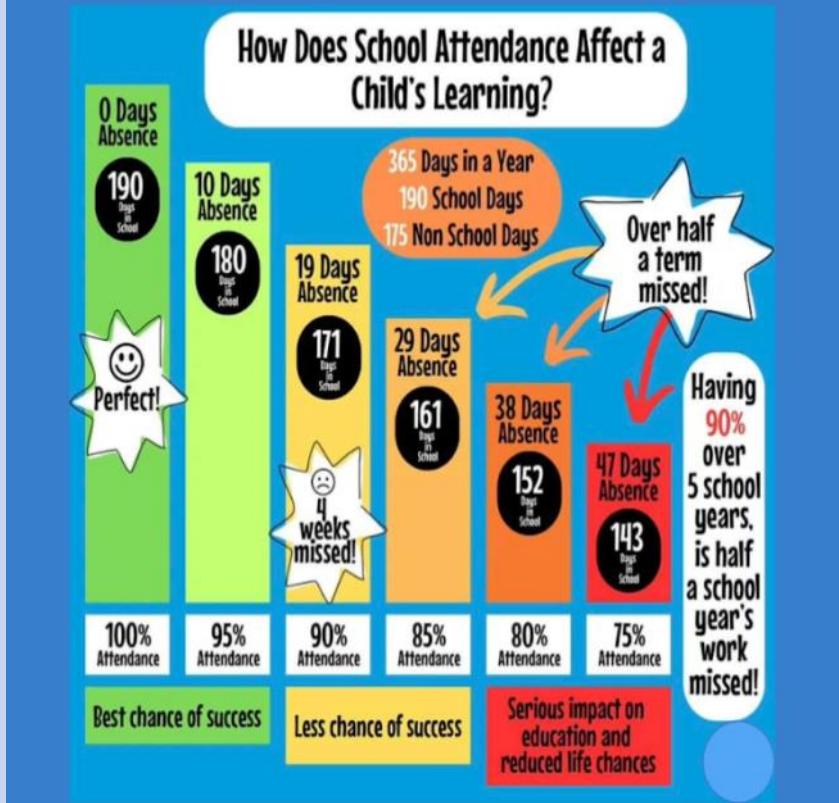
Check out our class blog site: www.standrewsallstars.com



Attendance Matters

| Attendance Percentages Last Week | Number of Children Late Before the Close of Register | Number of Children Late After the Close of Register |
|----------------------------------|--|---|
| YR—92% | YR—04 | YR—3 |
| Y1—99% | Y1—05 | Y1—1 |
| Y2—94% | Y2—08 | Y2—0 |
| Y3—97% | Y3—01 | Y3—0 |
| Y4—89% | Y4—05 | Y4—0 |
| Y5—96% | Y5—06 | Y5—0 |
| Y6—94% | Y6—04 | Y6—0 |

| Class | Number of children who read every day this week | Percentage |
|----------|---|------------|
| Mars | YR—0 | YR—0 |
| Cosmic | Y1—18 | Y1—77% |
| Golden | Y2—22 | Y2—82% |
| Diamond | Y3—16 | Y3—82% |
| Heroes | Y4—14 | Y4—75% |
| Stardust | Y5—0 | Y5—0% |
| | Y6—22 | Y6—88% |



DO WE HAVE A FUTURE MAYOR OF LONDON IN OUR MIDST?

One of our students, Kimberly, had the pleasure of spending Monday evening with our local leaders and meet many people in leadership from around the country in the UK & US as part of Lambeth black history month celebrations. She even had the chance to speak to the guests giving the closing remarks for the meeting. What bravery and courage from our future leader!





Year 5 & 6 attended Lordship Lane Baptist Church for the travelling Life exhibition about Jesus. They learnt about who Jesus is and the work he did through the miracles. The children watched stories from the Bible and answered questions about them with an interactive quiz at the end of the visit.

They told us their behaviour was the best they have seen from a year 5 class!

